

**Hochschule für Musik und Tanz Köln -
Hochschulbibliothek**

**Zu einer erbaulichen Betrachtung des Leidens und des
Todes unsers Heilandes Jesu Christi**

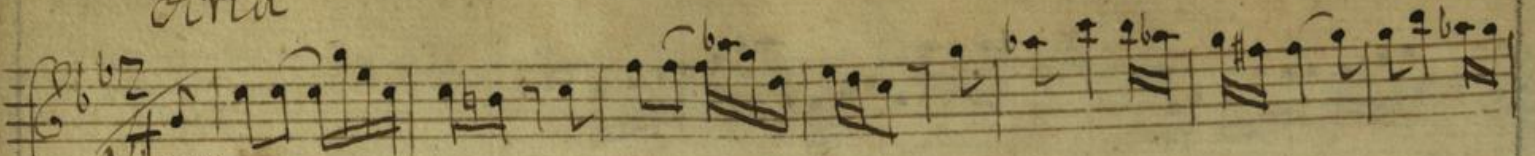
Graun, Carl Heinrich

[1750-1780]

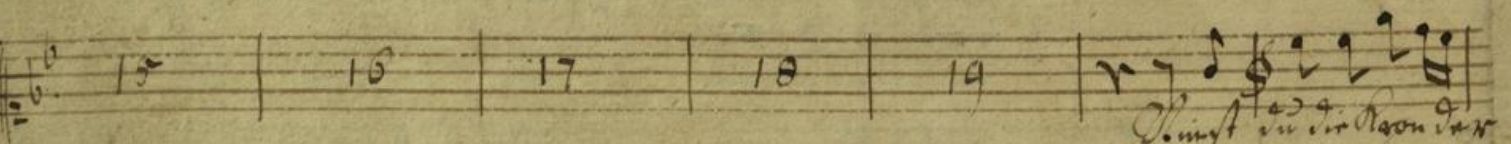
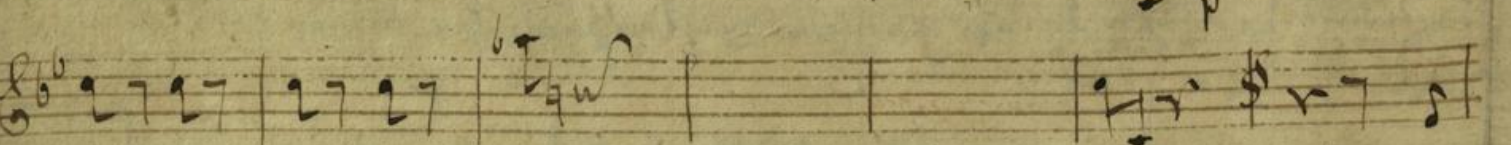
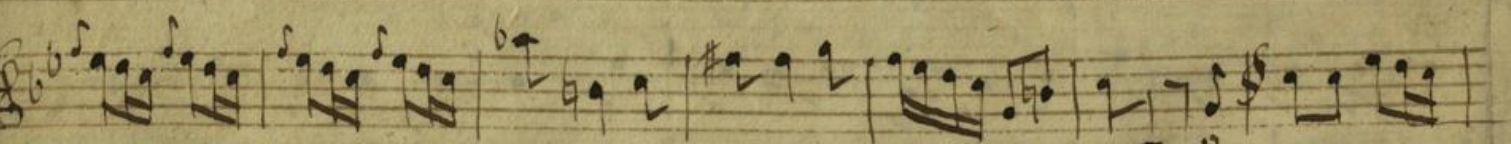
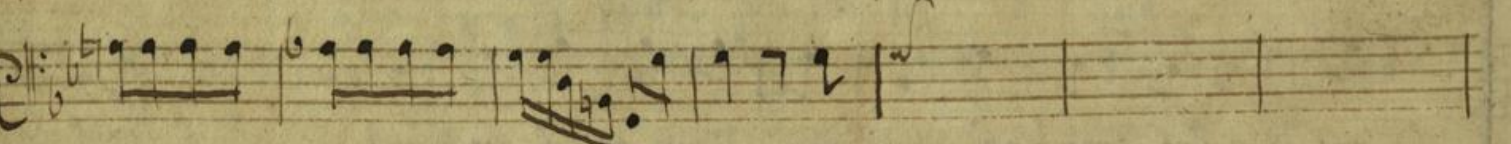
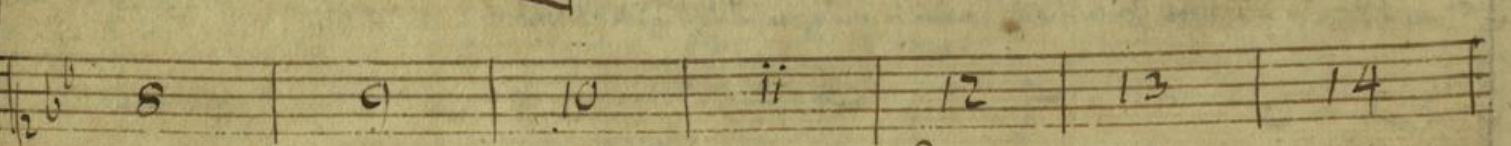
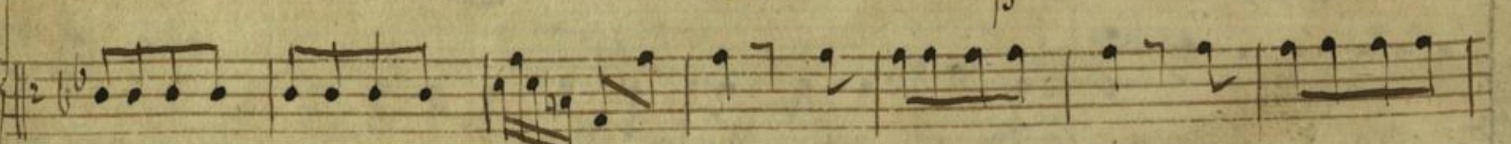
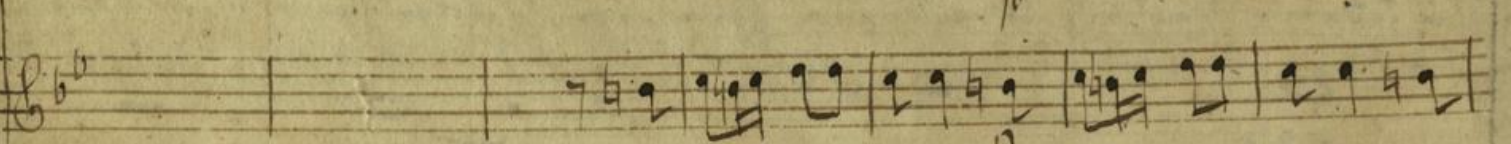
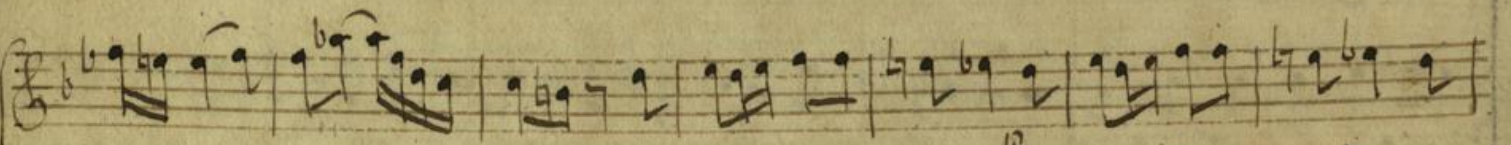
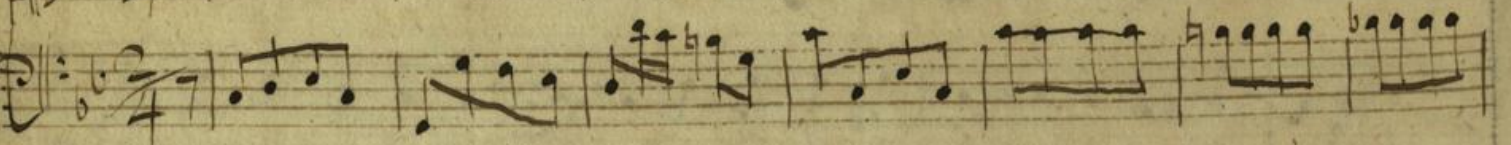
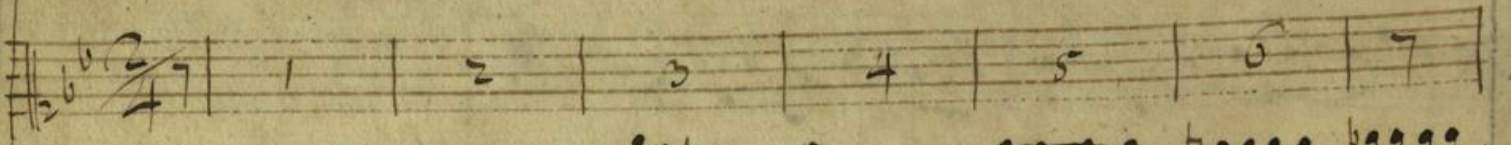
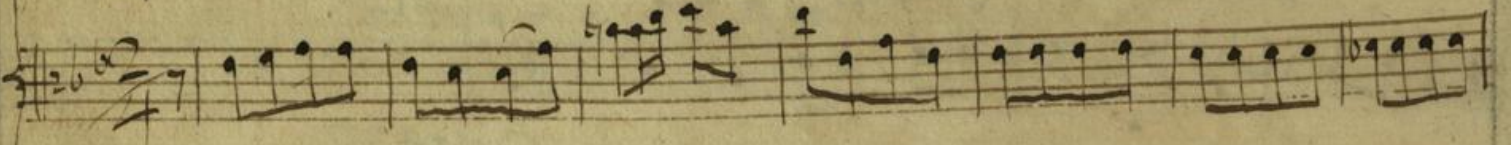
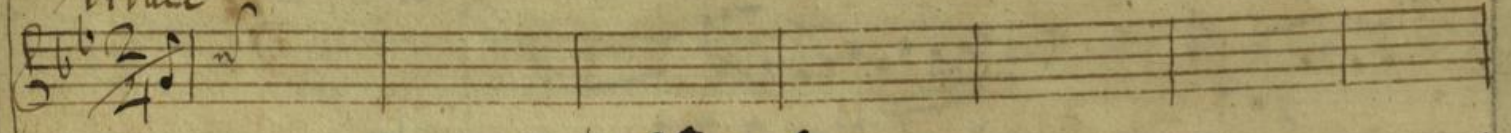
Aria. [Nimmst du die Kron' der Dornen an]

[urn:nbn:de:hbz:kn38-712](https://nbn-resolving.org/urn:nbn:de:hbz:kn38-712)

Aria



Vivace



Handwritten musical score for the first system. It consists of five staves. The top four staves are vocal parts, and the bottom staff is a basso continuo line. The lyrics are: *Corum, Intra Cor - um an, / o mni - bus al - ter - ni - tu - tar - rum In - tra - m - ur - bus*

Handwritten musical score for the second system. It consists of five staves. The top four staves are vocal parts, and the bottom staff is a basso continuo line. The lyrics are: *Corum In - tra - m - ur - bus Corum In - tra - m - ur - bus In - tra - m - ur - bus*

Handwritten musical score for the third system. It consists of five staves. The top four staves are vocal parts, and the bottom staff is a basso continuo line. The lyrics are: *um In - tra - m - ur - bus*

Handwritten musical score for the first system. It consists of five staves. The top staff is a vocal line in G major, starting with a treble clef and a key signature of one flat. The second staff is a piano accompaniment in G major, starting with a treble clef. The third staff is a piano accompaniment in G major, starting with a bass clef. The fourth staff is a piano accompaniment in G major, starting with a bass clef and containing the number '4' above the first measure. The fifth staff is a piano accompaniment in G major, starting with a bass clef and containing the number '5' above the first measure. The lyrics 'Nimm zu dir Kron und Dornen' are written below the fourth staff, with 'Dornen' written above the fifth staff.

Handwritten musical score for the second system. It consists of five staves. The top staff is a vocal line in G major, starting with a treble clef and a key signature of one flat. The second staff is a piano accompaniment in G major, starting with a treble clef. The third staff is a piano accompaniment in G major, starting with a bass clef and containing the text 'con Basso' at the end. The fourth staff is a piano accompaniment in G major, starting with a bass clef and containing the lyrics 'aus so unzufal als ein An - hertzen, das Leubzfarfe'. The fifth staff is a piano accompaniment in G major, starting with a bass clef.

Handwritten musical score for the third system. It consists of five staves. The top staff is a vocal line in G major, starting with a treble clef and a key signature of one flat. The second staff is a piano accompaniment in G major, starting with a treble clef. The third staff is a piano accompaniment in G major, starting with a bass clef. The fourth staff is a piano accompaniment in G major, starting with a bass clef and containing the lyrics 'Dornen farfe Dornen tragen das Leub - farfe der - unu tragen'. The fifth staff is a piano accompaniment in G major, starting with a bass clef.

colla voce

p *f*

in C - amb. sax. fu sax. fu cornu in C amb. sax. fu cornu sax. fu cornu

p *f*

Am - gu

p *f*

con Basso

7 8 9 10 11 12 13

colla voce

14 15

Der Herr durch deine Kraft im Mächt der

con voce

inf auf in der Herrs Macht im Welt mit Zöll und Zöllwagen im

Macht - - - mit Zöll und Zöll - - - wagen