

**Hochschule für Musik und Tanz Köln -
Hochschulbibliothek**

Zwei Stücke für Violoncello und Klavier

Manigold, Julius

[1900-1924]

[urn:nbn:de:hbz:kn38-3227](https://nbn-resolving.org/urn:nbn:de:hbz:kn38-3227)

148/133



Zwei Stücke

für

Violoncello & Klavier

N^o 1. Melodie.

N^o 2. Taktgracieuose.

von

Julius Hanigold

op. 7.



R 1981/1-2

Bücherei
Musik- und Tanz-Hochschule
Köln

M / 1-7231/1-2

MI

1283

ungültig

N 7231/A-2

Melodie.

leicht bewegt.

Violoncello

Violoncello staff with notes and dynamics: *p* *Mit inniger Empfindung.* *poco rit.* *al tempo*



Clavier

leicht bewegt.

Clavier staves with notes and dynamics: *p* *poco rit.* *al tempo*

Clavier staff with notes and dynamics: *mf*

Clavier staves with notes and dynamics: *mf*

Clavier staff with notes and dynamics: *p*

Clavier staves with notes and dynamics: *p*

Clavier staves with notes and dynamics: *crescendo* *rit.* *p* *al tempo*

Clavier staves with notes and dynamics: *crescendo* *rit.* *al tempo* *p*

Hochschule für Musik Köln

 KN38S0000090514

Handwritten musical notation on a single staff, featuring complex rhythmic patterns and dynamic markings. The markings include *pp*, *rit.*, and *pp a tempo*.

Handwritten musical notation on two staves. The upper staff includes markings for *pp*, *rit.*, and *pp a tempo*. The lower staff continues the musical composition.

Handwritten musical notation on a single staff, starting with the marking *mf* and *rescumb.*

Handwritten musical notation on two staves, beginning with the marking *pp*.

Handwritten musical notation on a single staff, starting with the marking *pp*.

Handwritten musical notation on two staves.

Handwritten musical notation on a single staff, starting with the marking *mf espr.*

Handwritten musical notation on two staves, starting with the marking *mf*.

R 1981 11



poco rit. a tempo
p
crescendo

poco rit. a tempo
p

mf
p
poco rit.

poco rit.

Tempo I.
p
poco rit. a tempo

Tempo I.
p
poco rit. a tempo

mf
p

The image shows a page of handwritten musical notation for piano and violin. The score is organized into systems. The first system consists of a single staff with a treble clef, marked *poco rit. a tempo* and *p*, ending with a *crescendo* hairpin. The second system is a grand staff (treble and bass clefs), also marked *poco rit. a tempo* and *p*. The third system is a grand staff, starting with a *mf* dynamic and ending with *poco rit.*. The fourth system is a grand staff, marked *poco rit.*. The fifth system is a grand staff, marked *Tempo I.* and *p*, with *poco rit. a tempo* written across the middle. The sixth system is a grand staff, marked *Tempo I.* and *p*, with *poco rit. a tempo* written across the middle. The seventh system is a grand staff, starting with *mf* and ending with *p*. The eighth system is a grand staff, starting with *mf* and ending with *p*. The notation includes various rhythmic values, accidentals, and phrasing slurs.

Handwritten musical notation on a single staff, featuring a melodic line with slurs and dynamic markings. The word *crescendo* is written above the staff, and *rit.* is written below it.

Handwritten musical notation for a grand staff (treble and bass clefs). The word *crescendo* is written above the treble staff, and *rit.* is written above the bass staff.

Handwritten musical notation on a single staff, featuring a melodic line with slurs and dynamic markings. The word *pp* is written below the staff, followed by *rit.* and *pp* again.

Handwritten musical notation for a grand staff. The word *pp* is written below the treble staff, followed by *rit.* and *pp* again.

Handwritten musical notation on a single staff, featuring a melodic line with slurs and dynamic markings. The word *ritard.* is written below the staff.

Handwritten musical notation for a grand staff. The word *ritard.* is written above the treble staff.

Two sets of empty musical staves, one for a single staff and one for a grand staff, located at the bottom of the page.

Valse gracieuse.

Tempo di Valse.

Violoncello

Violoncello staff with notes and dynamics: *p con grazia*, *crese.*, *calando*, *ritempo*

Clavier.

Clavier staff with notes and dynamics: *p*, *crese.*, *calando o tempo*

Violoncello staff with notes and dynamics: *mf. rpi.*

Clavier staff with notes and dynamics: *mf*, *ped. p.*, *p.*, *p.*

Violoncello staff with notes and dynamics: *crese. e allargando*, *ritempo*, *crese.*

Clavier staff with notes and dynamics: *ritempo*, *crese. e allargando*, *crese.*

Violoncello staff with notes and dynamics: *p*, *crecendo*

Clavier staff with notes and dynamics: *crecendo*, ***

calando

pacant. o tempo

calando o tempo

pacant. o tempo

Poco più mosso.

mf leggiero

Poco più mosso.

mf

mp crescendo

mp

crescendo

mf

Pub. #

mf

Handwritten musical notation on a single staff, featuring a melodic line with various accidentals and dynamics. The dynamic marking *f pizz* is written below the staff.

Handwritten musical notation on a grand staff (treble and bass clefs). The dynamic marking *allegro* is written below the bass staff.

Handwritten musical notation on a single staff. The dynamic marking *arco p* is written below the staff, and the tempo marking *Tempo I.* is written above the staff. The word *crescendo* is written at the end of the staff.

Handwritten musical notation on a grand staff. The tempo marking *Tempo I.* is written above the staff, and the word *crescendo* is written below the bass staff.

Handwritten musical notation on a single staff. The dynamic marking *calando* is written below the staff, followed by *ritempo*.

Handwritten musical notation on a grand staff. The dynamic marking *calando* is written above the staff, followed by *ritempo*.

Handwritten musical notation on a single staff. The dynamic marking *p* is written below the staff. The tempo markings *crescendo*, *ritard.*, and *p ritempo* are written below the staff.

Handwritten musical notation on a grand staff. The dynamic marking *p* is written below the staff. The tempo markings *crescendo*, *ritard.*, and *ritempo* are written above the staff. The word *And.* is written at the bottom left of the page.

Handwritten musical notation on a single staff. The key signature is B-flat major. The notation includes a whole note chord, followed by a rest, and then a melodic line starting with a half note. Performance markings include *prossimato* and *mf*.

Handwritten musical notation on two staves. The upper staff contains a melodic line with various note values and rests. The lower staff contains a bass line with chords and notes. Performance markings include *prossimato* and *mf*.

Handwritten musical notation on a single staff. The notation includes a melodic line with a half note and a quarter note. Performance markings include *f* and *rit. Menomano*.

Handwritten musical notation on two staves. The upper staff contains a melodic line with a half note and a quarter note. The lower staff contains a bass line with chords and notes. Performance markings include *rit. Menomano* and *p*.

Handwritten musical notation on a single staff. The notation includes a melodic line with a half note and a quarter note. Performance markings include *mf*, *accelerando*, *ritard.*, and *p a tempo*.

Handwritten musical notation on two staves. The upper staff contains a melodic line with a half note and a quarter note. The lower staff contains a bass line with chords and notes. Performance markings include *mf*, *accelerando*, *ritard.*, *p*, and *a tempo*.

Handwritten musical notation on a single staff. The notation includes a melodic line with a half note and a quarter note. Performance markings include *crescendo*, *ritard.*, and *p a tempo*.

Handwritten musical notation on two staves. The upper staff contains a melodic line with a half note and a quarter note. The lower staff contains a bass line with chords and notes. Performance markings include *crescendo*, *ritard.*, *p*, and *a tempo*.

Handwritten musical notation, first system. Includes dynamic markings *poco animato* and *mf*.

Handwritten musical notation, second system. Includes dynamic markings *poco animato* and *mf*.

Handwritten musical notation, third system. Includes dynamic markings *pp*, *Crescendo*, *ritardando*, and *ritempo*.

Handwritten musical notation, fourth system. Includes dynamic markings *pp*, *ritempo*, *ritardando*, and *ritempo*.

Handwritten musical notation, fifth system. Includes dynamic markings *mf espr.*

Handwritten musical notation, sixth system. Includes dynamic markings *mf* and *Per c.*

Handwritten musical notation, seventh system. Includes dynamic markings *cresc. e allargando*, *ritempo*, and *crescendo*.

Handwritten musical notation, eighth system. Includes dynamic markings *cresc. e allargando*, *ritempo*, and *cresc.*

Handwritten musical notation on a single staff. It begins with a treble clef and a key signature of two flats (B-flat and E-flat). The notation includes various note values, rests, and dynamic markings. A *pp* marking is present at the beginning, and a *crescendo* marking is written across the middle of the staff.

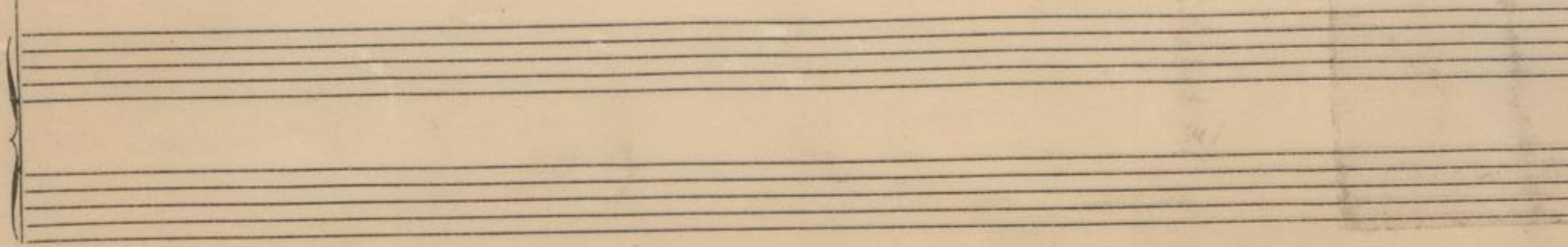
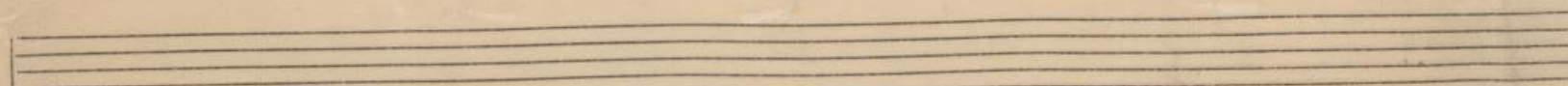
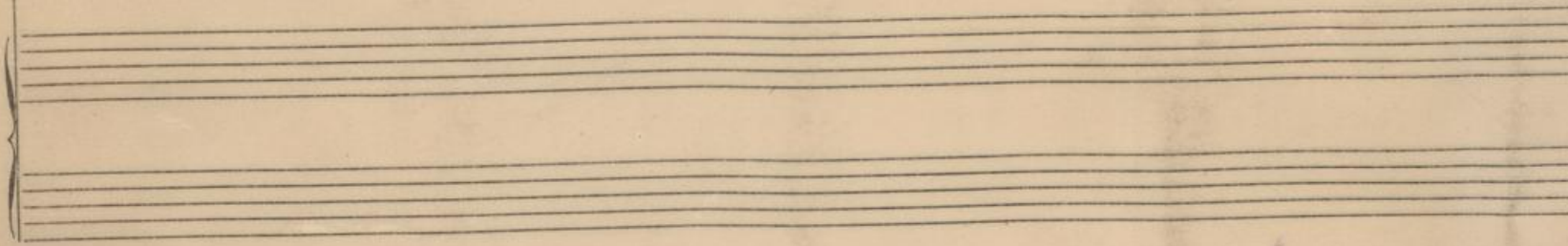
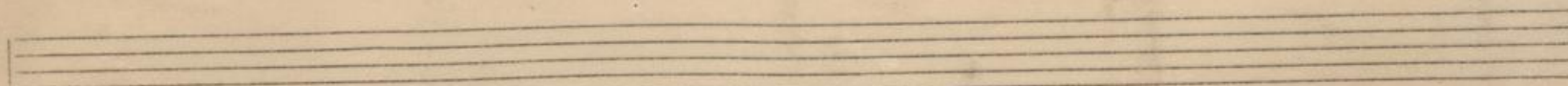
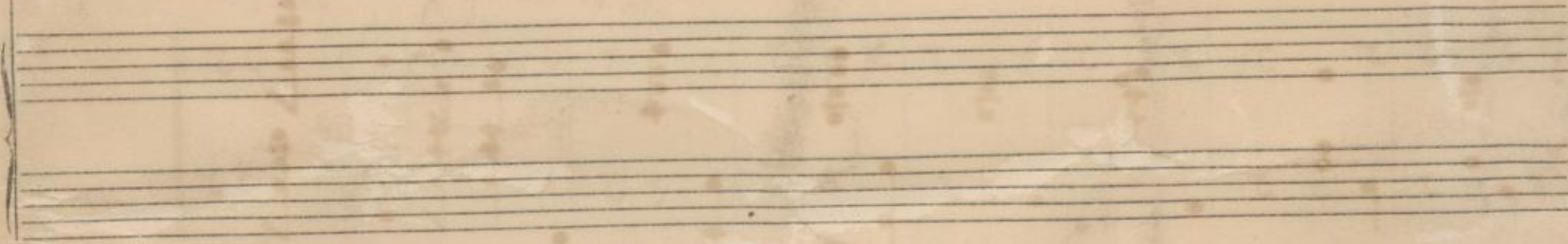
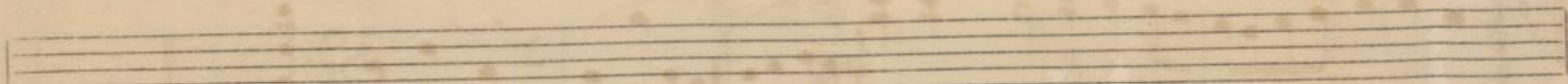
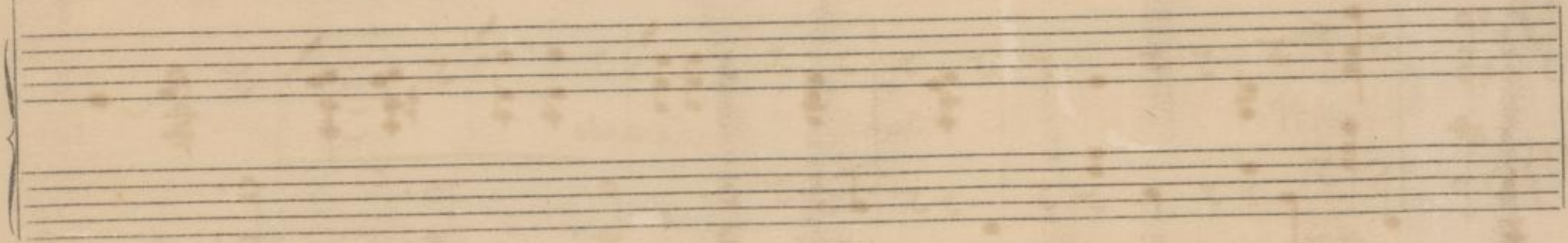
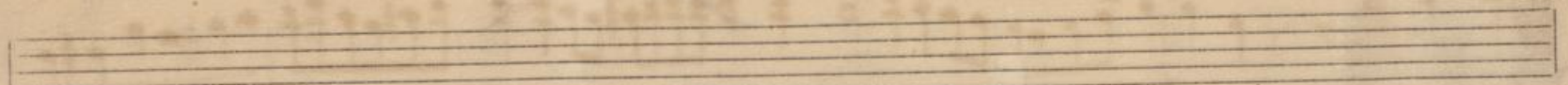
Handwritten musical notation on a grand staff (treble and bass clefs). The key signature remains two flats. The notation includes chords, single notes, and rests. A *pp* marking is present, and a *crescendo* marking is written across the middle of the staff. A small asterisk (*) is written below the first few notes of the bass line.

Handwritten musical notation on a single staff. It begins with a treble clef and a key signature of two flats. The notation includes various note values and rests. A *f* marking is present at the beginning. A *ritard.* marking is written above the staff, followed by *al tempo* and *più*.

Handwritten musical notation on a grand staff (treble and bass clefs). The key signature remains two flats. The notation includes chords, single notes, and rests. A *ritard.* marking is written above the staff, followed by *al tempo*. A *pp* marking is present in the middle of the staff.

Two empty grand staves (treble and bass clefs) for musical notation.

Two empty grand staves (treble and bass clefs) for musical notation.



K 130112

Zwei Stücke für Violoncello & Klavier von Julius Hanigold
Violoncello
Klavierbeweg. Nr. 4. Melodie. Violoncello

p *Mit intensiver Empfindung.* *poco rit.* *rit.* *atempo* *mf* *crescendo* *rit.* *poco tempo* *poco rit.* *pp* *atempo* *rit.* *mf* *crescendo* *p* *mf* *pp* *atempo* *cresc.* *mf* *poco rit.* *p*

Bibliothek
der
Staatl. Hochschule für Musik
Königreich Köln
R 1981/2
M / - 7231 / 2



nr 7231/2

Tempo I.

p *cresc.* *a tempo*

mf

p *cresc.*

rit. *a tempo* *cresc.* *pp* *a tempo*

ritard.

N^o 2. Valse gracieuse.

Tempo di Valse.

p *cresc.* *calando*

a tempo *mf esp.*

cresc. e allargando *a tempo*

cresc. *p*

cresc. *calando* *a tempo*

Handwritten musical score for piano, consisting of 11 staves. The score includes various musical notations such as notes, rests, and dynamic markings. Key annotations include:

- procris. a tempo* (Staff 1)
- ppiu mosso.* (Staff 1)
- mf leggiero.* (Staff 1)
- mf* (Staff 3)
- f pizz.* (Staff 5)
- arco p* (Staff 5)
- Tempo I.* (Staff 5)
- cresc.* (Staff 5)
- crescendo* (Staff 6)
- rit.* (Staff 6)
- pp* (Staff 6)
- rit.* (Staff 7)
- pp* (Staff 7)
- ppiu animato* (Staff 7)
- mf* (Staff 7)
- rit.* (Staff 7)
- Muovimento* (Staff 7)
- pp* (Staff 7)
- mf* (Staff 8)
- accelerando* (Staff 8)
- crescendo* (Staff 8)
- 19.* (Staff 8)

M 1-7231

Handwritten signature and initials.

Handwritten musical score on ten staves. The notation includes treble and bass clefs, a key signature of two flats, and various musical symbols such as notes, rests, and dynamic markings. The score is annotated with the following terms:

- Staff 1: *al tempo*, *pp*, *crescendo*, *rit.*
- Staff 2: *al tempo*, *pp*, *poco animato*, *mf*
- Staff 3: *Tempo I.*, *pp*
- Staff 4: *crescendo*, *calando*, *al tempo*
- Staff 5: *mf espr.*
- Staff 6: *cresc. e allargando*, *al tempo*
- Staff 7: *crescendo*, *pp*
- Staff 8: *crescendo*, *f*
- Staff 9: *ritard.*, *p al tempo*, *piu mosso*