

**Hochschule für Musik und Tanz Köln -
Hochschulbibliothek**

Zwei Stücke für Violoncello und Klavier

Manigold, Julius

[1900-1924]

Partitur

[urn:nbn:de:hbz:kn38-3227](https://nbn-resolving.org/urn:nbn:de:hbz:kn38-3227)

N 7231/A-2

Melodie.

leicht bewegt.

Violoncello

Violoncello staff with notes and dynamics: *p* *Mit inniger Empfindung.* *poco rit.* *al tempo*



Pianoforte

leicht bewegt.

Pianoforte staves with notes and dynamics: *p* *poco rit.* *al tempo*

Ped. staff with notes and dynamics: *mf*

Pianoforte staves with first and second endings: *mf*

Ped. staff with notes and dynamics: *p*

Pianoforte staves with notes and dynamics: *p*

Ped. staff with notes and dynamics: *crescendo* *rit.* *p* *al tempo*

Pianoforte staves with notes and dynamics: *crescendo* *rit.* *al tempo* *p*

Hochschule für Musik Köln

 KN38S0000090514

Handwritten musical notation on a single staff. The notation includes various rhythmic values and accidentals. Performance markings include *rit.* and *pp a tempo*.

Handwritten musical notation on two staves. The notation includes various rhythmic values and accidentals. Performance markings include *rit.*, *pp*, and *a tempo*.

Handwritten musical notation on a single staff. The notation includes various rhythmic values and accidentals. Performance markings include *mf* and *rescumb.*

Handwritten musical notation on two staves. The notation includes various rhythmic values and accidentals. Performance markings include *p*.

Handwritten musical notation on a single staff. The notation includes various rhythmic values and accidentals. Performance markings include *p*.

Handwritten musical notation on two staves. The notation includes various rhythmic values and accidentals. Performance markings include *p*.

Handwritten musical notation on a single staff. The notation includes various rhythmic values and accidentals. Performance markings include *mf espr.* and *ch.*

Handwritten musical notation on two staves. The notation includes various rhythmic values and accidentals. Performance markings include *mf*.

R 1981 11



poco rit. a tempo
p
crescendo

poco rit. a tempo
p

mf
p
poco rit.

poco rit.

Tempo I.
p
poco rit. a tempo

Tempo I.
p
poco rit. a tempo

mf
p

Handwritten musical notation on a single staff, featuring a melodic line with slurs and dynamic markings. The word *crescendo* is written above the staff, and *rit.* is written below it.

Handwritten musical notation for a grand staff (treble and bass clefs). The word *crescendo* is written above the treble staff, and *rit.* is written above the bass staff.

Handwritten musical notation on a single staff, featuring a melodic line with slurs and dynamic markings. The word *pp* is written below the staff, and *precrit. pp* is written above it.

Handwritten musical notation for a grand staff. The word *pp* is written below the treble staff, and *precrit. pp* is written above it.

Handwritten musical notation on a single staff, featuring a melodic line with slurs and dynamic markings. The word *ritard.* is written below the staff.

Handwritten musical notation for a grand staff. The word *ritard.* is written above the treble staff.

Two sets of empty musical staves, one for a grand staff and one for a single staff, located at the bottom of the page.

Valse gracieuse.

Tempo di Valse.

Violoncello

Violoncello staff with notes and dynamics: *p con grazia*, *crese.*, *calando*, *ritempo*

Clavier.

Clavier staff with notes and dynamics: *p*, *crese.*, *calando o tempo*

Violoncello staff with notes and dynamics: *mf. rpi.*

Clavier staff with notes and dynamics: *mf*, *ped. p.*, *p.*, *p.*

Violoncello staff with notes and dynamics: *crese. e allargando*, *ritempo*, *crese.*

Clavier staff with notes and dynamics: *ritempo*, *crese. e allargando*, *crese.*

Violoncello staff with notes and dynamics: *p*, *crecendo*

Clavier staff with notes and dynamics: *crecendo*, ***

calando

pacant. o tempo

calando o tempo

pacant. o tempo

Poco più mosso.

mf leggiero

Poco più mosso.

mf

mp crescendo

mp

crescendo

mf

Ped.

mf

f pizz

arco p *rescendo*

Tempo I:

rescendo

calando a tempo

calando a tempo

p *rescendo* *ritard.* *p a tempo*

rescendo *ritard.* *a tempo*

ped.

The image shows a handwritten musical score for piano, consisting of eight systems of staves. The notation includes treble and bass clefs, various note values, rests, and dynamic markings. The score is written in a single key signature with one sharp (F#). The first system features a treble staff with a melodic line and a bass staff with accompaniment. The second system continues the piece with similar notation. The third system includes a tempo change to 'Tempo I:' and dynamic markings 'arco p' and 'rescendo'. The fourth system also features a 'Tempo I:' marking and 'rescendo'. The fifth system is marked 'calando a tempo'. The sixth system continues with 'calando a tempo'. The seventh system includes dynamic markings 'p', 'rescendo', 'ritard.', and 'p a tempo'. The eighth system includes 'rescendo', 'ritard.', and 'a tempo', and ends with a 'ped.' marking. The handwriting is in dark ink on aged paper.

Handwritten musical notation on a single staff. The key signature is B-flat major. The notation includes a whole note, a half note, and a series of eighth notes. Performance markings include *prossimato* and *mf*.

Handwritten musical notation on two staves. The upper staff contains a melodic line with eighth notes and slurs. The lower staff contains a bass line with chords and eighth notes. Performance markings include *prossimato* and *mf*.

Handwritten musical notation on a single staff. The notation includes a series of eighth notes and chords. Performance markings include *f* and *rit. Menomano*.

Handwritten musical notation on two staves. The upper staff contains a melodic line with eighth notes and slurs. The lower staff contains a bass line with chords and eighth notes. Performance markings include *rit. Menomano* and *p*.

Handwritten musical notation on a single staff. The notation includes a series of eighth notes and chords. Performance markings include *mf*, *accelerando*, *ritard.*, and *p a tempo*.

Handwritten musical notation on two staves. The upper staff contains a melodic line with eighth notes and slurs. The lower staff contains a bass line with chords and eighth notes. Performance markings include *mf*, *accelerando*, *ritard.*, *p*, and *a tempo*.

Handwritten musical notation on a single staff. The notation includes a series of eighth notes and chords. Performance markings include *crescendo*, *ritard.*, and *p a tempo*.

Handwritten musical notation on two staves. The upper staff contains a melodic line with eighth notes and slurs. The lower staff contains a bass line with chords and eighth notes. Performance markings include *crescendo*, *ritard.*, *p*, and *a tempo*.

Handwritten musical notation on a single staff. The notation includes notes, rests, and dynamic markings. The dynamic markings are *pp* and *mf*.

Handwritten musical notation on two staves (treble and bass clef). The notation includes notes, rests, and dynamic markings. The dynamic markings are *pp* and *mf*. The word *ritardando* is written above the first staff.

Handwritten musical notation on a single staff. The notation includes notes, rests, and dynamic markings. The dynamic markings are *pp*, *crescendo*, *ritardando*, and *rit.*. The word *Tempo I.* is written at the beginning.

Handwritten musical notation on two staves (treble and bass clef). The notation includes notes, rests, and dynamic markings. The dynamic markings are *pp*, *cresc.*, *ritardando*, and *rit.*. The word *Tempo I.* is written at the beginning.

Handwritten musical notation on a single staff. The notation includes notes, rests, and dynamic markings. The dynamic marking is *mf espr.*

Handwritten musical notation on two staves (treble and bass clef). The notation includes notes, rests, and dynamic markings. The dynamic markings are *mf* and *pp*.

Handwritten musical notation on a single staff. The notation includes notes, rests, and dynamic markings. The dynamic markings are *cresc. e allargando*, *rit.*, and *crescendo*.

Handwritten musical notation on two staves (treble and bass clef). The notation includes notes, rests, and dynamic markings. The dynamic markings are *cresc. e allargando*, *rit.*, and *cresc.*.

Handwritten musical notation on a single staff. It begins with a treble clef and a key signature of two flats (B-flat and E-flat). The notation includes various note values, rests, and dynamic markings. A *pp* marking is present at the beginning, and a *crescendo* marking is written across the middle of the staff.

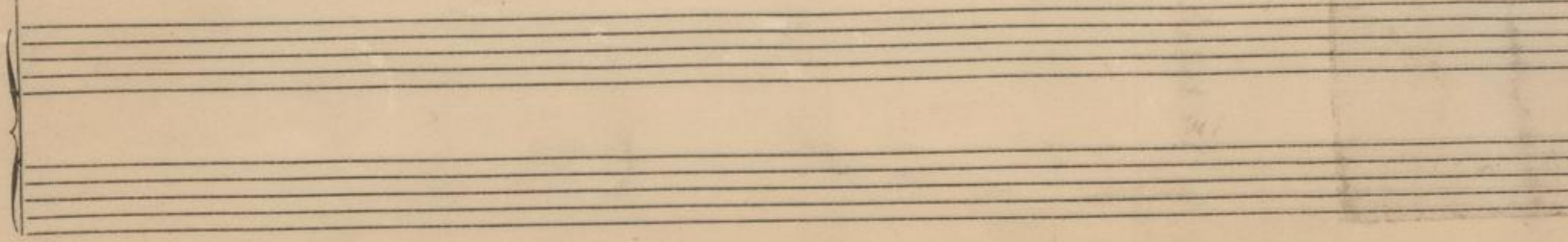
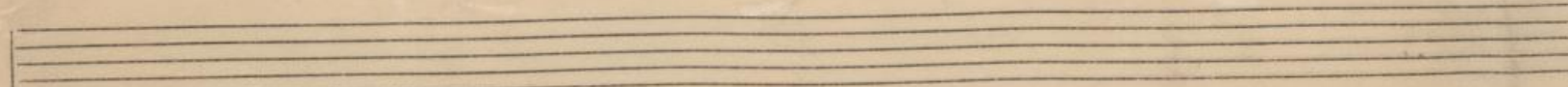
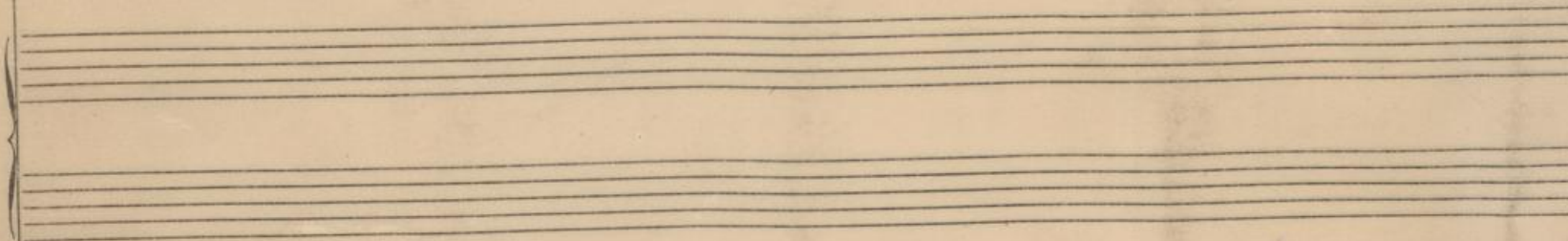
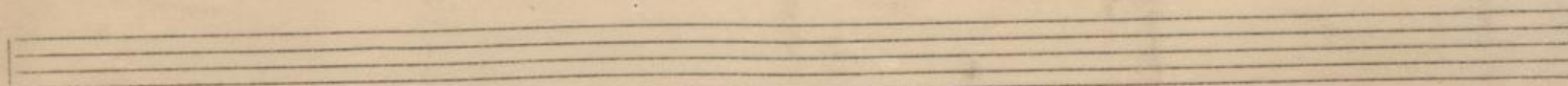
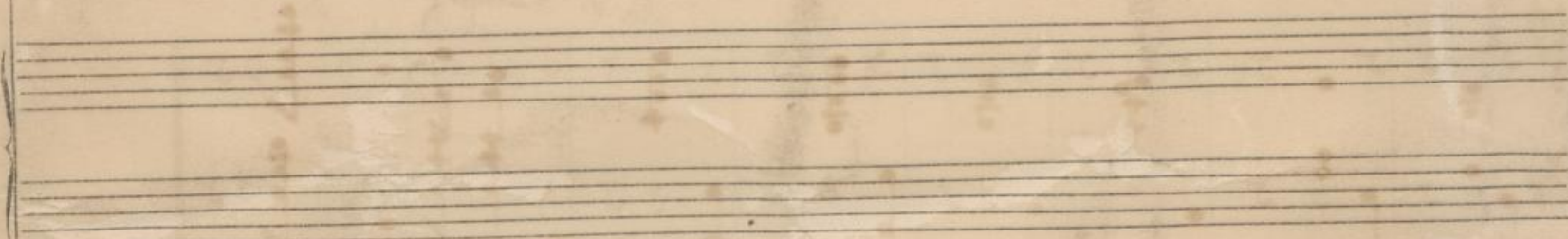
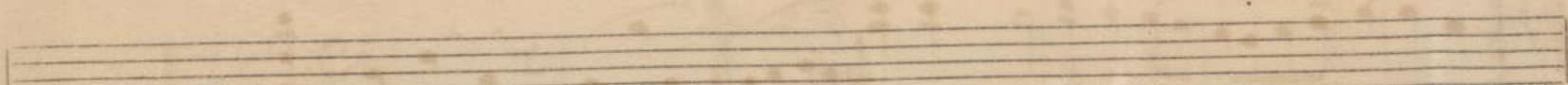
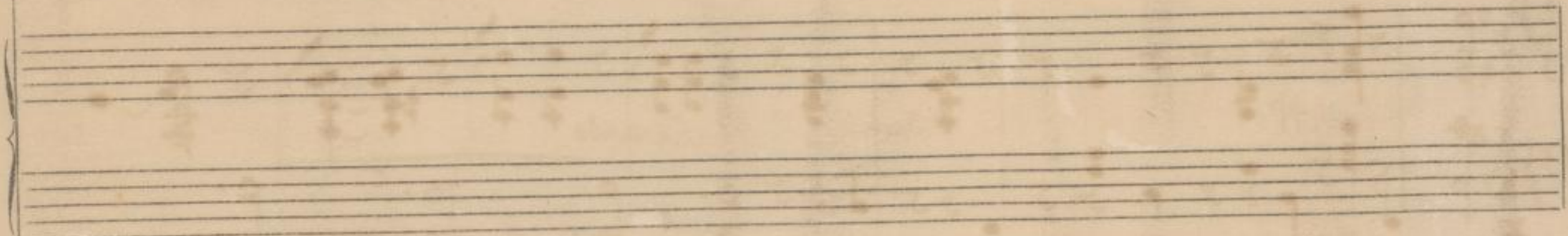
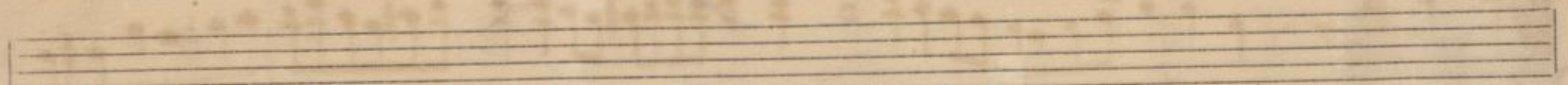
Handwritten musical notation on a grand staff (treble and bass clefs). The key signature remains two flats. The notation includes chords and melodic lines. A *pp* marking is present, and a *crescendo* marking is written across the middle of the staff. A small asterisk (*) is written below the bass clef staff.

Handwritten musical notation on a single staff. It begins with a treble clef and a key signature of two flats. The notation includes various note values and rests. A *f* marking is present at the beginning. A *ritard.* marking is written above the staff, followed by *al tempo* and *più*.

Handwritten musical notation on a grand staff (treble and bass clefs). The key signature remains two flats. The notation includes chords and melodic lines. A *ritard.* marking is written above the staff, followed by *al tempo* and *pp*.

Two sets of empty musical staves, each consisting of a grand staff (treble and bass clefs).

Two sets of empty musical staves, each consisting of a grand staff (treble and bass clefs).



K 130112