

Hochschule für Musik und Tanz Köln - Hochschulbibliothek

Te Deum Laudamus

Bergt, August

Leipzig, [1820]

Allegro moderato. [Chor]. [Et laudamus nomen tuum -- und der Lobgesang
tönet schöner]

[urn:nbn:de:hbz:kn38-4037](https://nbn-resolving.org/urn:nbn:de:hbz:kn38-4037)

The first part of the musical score consists of ten staves. The top two staves are in treble clef with a key signature of one flat (B-flat). The third staff is in bass clef with a key signature of one flat. The fourth and fifth staves are in treble clef with a key signature of one flat. The sixth staff is in bass clef with a key signature of one flat. The seventh and eighth staves are in treble clef with a key signature of one flat. The ninth staff is in bass clef with a key signature of one flat. The tenth staff is in bass clef with a key signature of one flat and contains a trill marked 'tr' and 'sf'. Dynamics include 'sf' (sforzando) and 'f' (forte) throughout the section.

be - nedicimus te, be - nedi - cimus te, et lau - da - mus no - men tu - um in
 sind veredelter wir, sind vere - delter wir, und der Lobsang tönet schöner von ver-

The second part of the musical score consists of five staves. The top two staves are in treble clef with a key signature of one flat. The third staff is in bass clef with a key signature of one flat. The fourth staff is in bass clef with a key signature of one flat. The fifth staff is in bass clef with a key signature of one flat and contains the word 'ten' above it. Dynamics include 'sf' (sforzando) and 'f' (forte) throughout the section.

se - culum se - cu - li, et lau - damus nomen tu - um in seculum secu -
 klärten Lippen dir, und der Lobsang tönnet schö - ner von verklär - ten Lippen

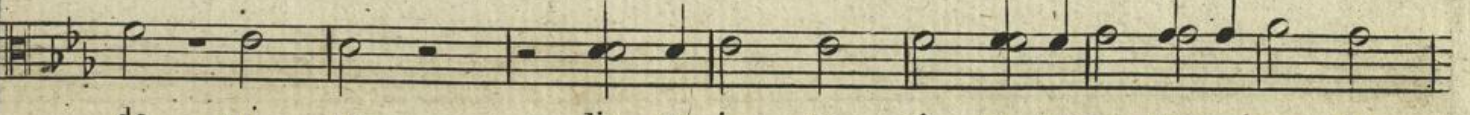
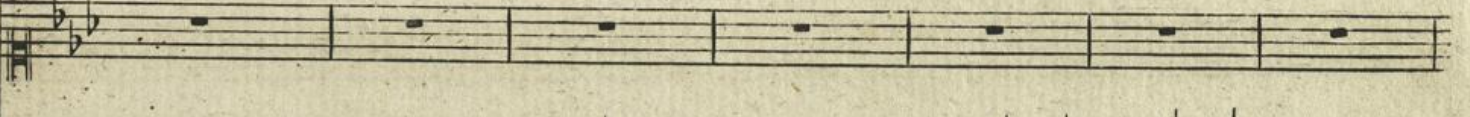
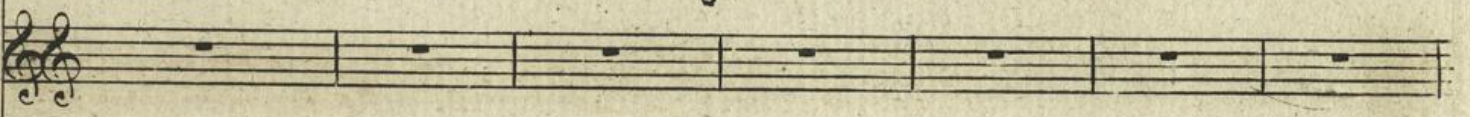
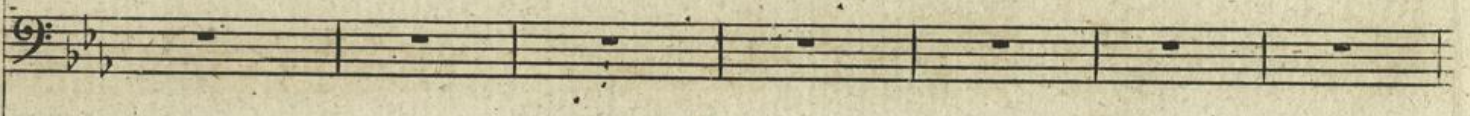
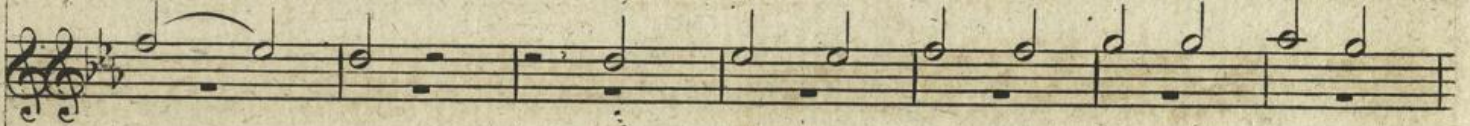
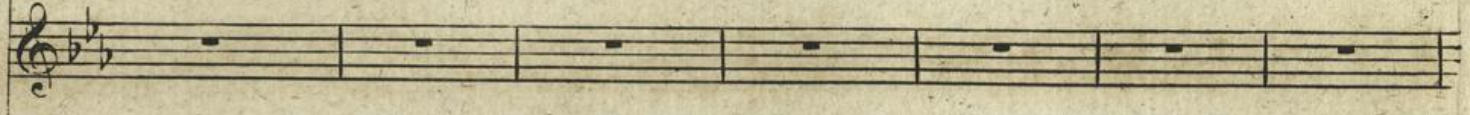
The first part of the musical score consists of ten staves. The top two staves are treble clefs, and the bottom two are bass clefs. The music is written in a minor key and features intricate rhythmic patterns, including sixteenth and thirty-second notes. Dynamic markings such as *pp* (pianissimo) are present throughout the section.

li, in se_culum secu - li.
dir, von verklärten Lippen dir.

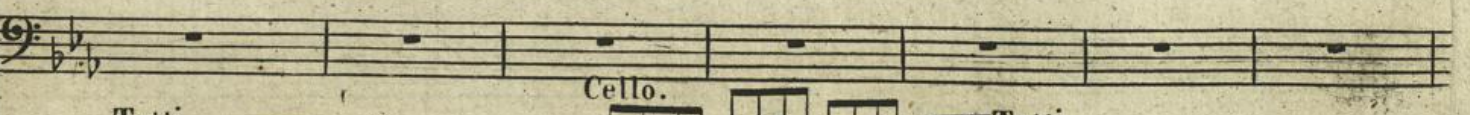
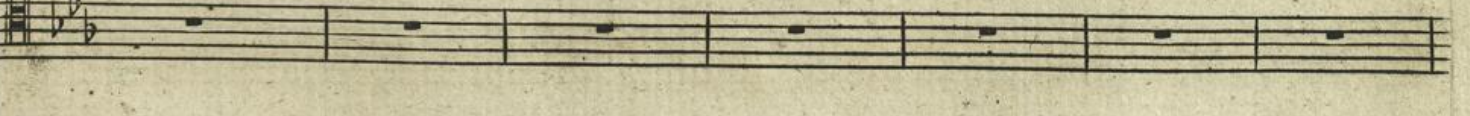
Solo
Di - gna - re,
Doch fahr - voll

Cello

pp



do - mi - ne, di - e i - sto si - ne pecca - to nos cu - sto -
ist der Pfad, auf dem der Christ zum fer - nen Zie - le



Tutti.

Cello.

Tutti.



Handwritten musical score for a cello part. The score consists of 14 staves. The first three staves contain complex musical notation with many beamed notes. The fourth and fifth staves are mostly rests. The sixth staff has a few notes. The seventh through tenth staves are mostly rests. The eleventh staff has a few notes. The twelfth staff has a few notes. The thirteenth staff has a few notes. The fourteenth staff has a few notes.

Lyrics:

di - - re; Mi - se - re - re no - stri do - - mi - ne!
glim - - met. Fern sey uns Wahn und Mis - - se - that!

Cello. Tutti. Cello.

Fi - at mi - se - ri - car - di - a tu - a su - pra nos,
 O schenk' uns Geist und Kraft und Muth und Rath,

quem - ad - mo - dum spe - ra - vi - mus in te.
 wenn Ei - ner dich, o Gott, ver - trau - end bat.

Tutti

f

In te,
 Ia, wir

Tutti

mf

f

mf

mf

mf

nfp

Tutti.

f

Tutti.

f

Tutti.

In te, Do - mi - ne, spe - ra - vi, in te, Do - mi - ne, spe - ravi,
 Ia, wir traun auf deinen Namen, ja, wir traun auf deinen Namen,

Do - mi - ne, spe - ra - vi,
 traun auf deinen Na - men,

