

Interactive Online Learning for Obstacle Classification on a Mobile Robot

Viktor Losing^{*†}, Barbara Hammer^{*} and Heiko Wersing[†]

^{*}Bielefeld University, Universitätsstr. 25, 33615 Bielefeld

[†]HONDA Research Institute Europe, Carl-Legien-Str. 30, 63073 Offenbach am Main

Abstract—We present an architecture for incremental online learning in high-dimensional feature spaces and apply it on a mobile robot. The model is based on learning vector quantization, approaching the stability-plasticity problem of incremental learning by adaptive insertions of representative vectors. We employ a cost-function-based learning vector quantization approach and introduce a new insertion strategy optimizing a cost-function based on a subset of samples. We demonstrate this model within a real-time application for a mobile robot scenario, where we perform interactive real-time learning of visual categories.

I. INTRODUCTION

Incremental learning methods gain a lot of attention nowadays [1], [2]: highly variable applications require flexible algorithms adapting to new trends in the data as well as learning with limited resources from endless streams. In this situation, classical offline methods are inapplicable due to their dependency on the full data set and necessity for a complete retraining. The flexible adaptation of technical systems to user habits and preferences is very important for their acceptance, as noted for the learning Nest thermostat [3]. Also other fully autonomous devices such as robotic vacuum cleaners or lawn mowers largely benefit from learning their application environment and keeping it up-to-date [4]. Even though a few incremental versions of offline methods have been proposed [5], [6], [7], there is still a strong demand for improved algorithms.

In this contribution we investigate a flexible scheme for interactive learning, a predestined application for incremental algorithms [8]. An online recognition architecture that is capable of interactive learning of up to 50 objects in short time was presented in [9]. Here we will rely on a similar architecture but incorporate and investigate a richer online learning model. Vision based incremental learning on a mobile robot was also performed in [10], [11]. However, these systems perform indoors and use different algorithms such as incremental SVM or bag of words. We demonstrate our framework within a real-time learning scenario which focuses on the challenging task of outdoor object classification on a mobile robot. Specific contributions are:

- Extension of prototype based learning to online scenarios with adjustable model complexity.
- Extensive evaluation of different strategies to insert prototypes for these adjusted models.
- Integration of this framework into an easy-to-use online learning system paired with a live-labeling app.

Prototype-based approaches such as neural gas [12] or learning vector quantization (LVQ) [13] are popular options among

online learning algorithms, with applications ranging from biomedical data analysis [14], image recognition [15], to robotics [16]. Due to their successful application we will focus on such models, in particular supervised LVQ.

The ability of structure adaptation according to the complexity of a given task is helpful and becomes even more crucial with regards to big or streaming data sets violating the assumption of data being i. i. d. [16], [17]. Dynamic prototype insertions and deletions enable this flexibility intuitively. Moreover, these can be done in an efficient and incremental way since they affect the model only locally.

Several proposals for placement strategies of prototype insertion, based on heuristics, were made in [18], [19], [9]. In contrast, our proposal relies on the derivation of LVQ as cost function optimization; it optimizes an approximation of these costs for improved robustness. Since we confine the optimization on a limited number of recent samples, the resulting implementation offers the advantages of an adjustable and strictly limited memory consumption paired with linear complexity. Such linear time and constant memory conditions are especially relevant for efficient mobile applications.

II. GENERALIZED LVQ

Given a classification task of C classes, the training set $X = \{(\mathbf{x}_i, y_i) \in \mathbb{R}^n \times \{1, \dots, C\}\}_{i=1}^m$ is approximated by an LVQ classifier with a set of p prototypes $W = \{(\mathbf{w}_j, l_j) \in \mathbb{R}^n \times \{1, \dots, C\}\}_{j=1}^p$. The Voronoi region of a prototype (\mathbf{w}_j, l_j) is defined as $V_j = \{\mathbf{x} \in X \mid \|\mathbf{x} - \mathbf{w}_j\| \leq \|\mathbf{x} - \mathbf{w}_k\| \forall j \neq k\}$. A given data point \mathbf{x}_i is classified according to the label of its closest prototype using a distance measure d such as the squared Euclidean distance $d(\mathbf{x}, \mathbf{w}) = \|\mathbf{x} - \mathbf{w}\|^2$. Sato and Yamada introduced the generalized LVQ (GLVQ) [20] which, in contrast to previous heuristic approaches, minimizes the cost-function

$$E(X, W) = \sum_{i=1}^m \Phi((d_i^+ - d_i^-)/(d_i^+ + d_i^-)), \quad (1)$$

where Φ is a monotonically increasing function, e.g. the logistic function. The distance of a sample \mathbf{x}_i to its closest prototype \mathbf{w}^\pm of the correct / incorrect class is denoted by d_i^\pm . By updating the prototypes for each data point as follows

$$\mathbf{w}^\pm := \mathbf{w}^\pm - \lambda \frac{\partial E(X, W)}{\partial \mathbf{w}^\pm}, \quad (2)$$

where λ is the learning rate, the cost function is minimized in a stochastic gradient descent scheme.

III. LEARNING ARCHITECTURE

We solely focus on supervised learning from data-streams. Every prototype \mathbf{w}_j has its own linearly decreasing learning rate λ_j to approach the stability-plasticity dilemma [9]. As an overview, the learning architecture works as follows:

The learning architecture initially does not have any prototype, i.e. $W = \emptyset$. For each new sample (x_i, y_i) we test whether y_i is a new class. If y_i is not yet represented in the model, this sample is directly added as a prototype. Otherwise, we perform the GLVQ-updates (2) and store the sample with its distance information in a short term memory of limited size, replacing old ones if necessary. If the sample is misclassified we increment an error count. As soon as a predefined number of errors occurs, the employed placement strategy provides a new prototype which is added to the set of prototypes W . Then, we update distances within the short term memory. The error count is reset and we start over again. In the remainder of the section, the single steps are described in more detail.

A. Limited Sample Memory

Apart from the prototypes, we maintain a short term memory which is defined as a list

$$\Psi := [(x_i, y_i, d_i^+, d_i^-) \mid i \in \{1, \dots, t\}], \quad (3)$$

containing entries for the recent t samples. Every additional sample leads to the deletion of the oldest entry as soon as the limit of t stored entries is reached, i.e. $|\Psi| = t$. Therefore, the memory consumption of the system is limited, which is crucial for online learning. Based upon Ψ , placement strategies propose new prototypes.

The GLVQ-updates (2) change prototype positions and corresponding sample distances. However, we neglect these changes within Ψ for the sake of efficiency. Hence Ψ contains approximations of the actual distances and their quality depends on the magnitude of the learning rates λ_j as well as on the window size t . During our experiments, this simplification had negligible or even no consequence on the systems' performance. We used a window size of $t = 200$ for all experiments.

B. Insertion Timing

Insertion timing is based on error counting as already proposed in [9]. Whenever the error count reaches a threshold, a new prototype is added and the error count is reset to zero. This simple and computationally cheap approach couples growing speed strictly with systems' performance on training data. The learning architecture evolves fast in case of low accuracy but changes only slightly when few errors are made. Consequently, a system will grow as long as it does not classify perfectly (i.e. infinitely in case of overlapping classes). This could easily be avoided by a restriction of the incremental growth to cases which significantly improve the GLVQ cost function. However, this goes beyond the scope of this paper.

C. Insertion of Prototypes

Whenever a new prototype (\mathbf{w}, l) is proposed by a placement strategy and inserted into the network, i.e.

$W := W \cup (\mathbf{w}, l)$, Ψ is updated in the following way:

$$\begin{aligned} \forall (x_i, y_i, d_i^+, d_i^-) \in \Psi : \\ d_i^+ := d(x_i, \mathbf{w}), \text{ if } y_i = l \wedge d_i^+ > d(x_i, \mathbf{w}) \\ d_i^- := d(x_i, \mathbf{w}), \text{ if } y_i \neq l \wedge d_i^- > d(x_i, \mathbf{w}). \end{aligned} \quad (4)$$

D. State of the Art Placement Strategies

Each placement strategy proposes one new prototype whenever a predefined number of errors is reached.

We compare our proposal with three other strategies from the literature, which solely rely on misclassified samples. The set of misclassifications can be easily extracted from Ψ as $\Upsilon = \{(x_i, y_i) \mid (x_i, y_i, d_i^+, d_i^-) \in \Psi \wedge d_i^+ > d_i^-\}$. The strategies select one prototype based on Υ as follows:

a) *Closest*: In [9] Kirstein et al. propose to select those misclassified samples as candidates that are the closest to prototypes of another class. This choice shall lead to insertions along class borders. Candidates are ordered ascendingly by their distance to the nearest wrong class.

b) *Cluster*: Grbovic et al. cluster misclassified samples per class and select centroids of the biggest clusters as new prototypes [18]. Therefore, the cluster-size is the ranking criterion for candidates. We used k-Means to cluster misclassifications. Since k has to be predefined, the common rule of thumb $k = \sqrt{\frac{n}{2}}$ was utilized. However, this value was multiplied by a factor of two to achieve the best experimental results.

c) *Voronoi*: A similar approach was chosen by Bermejo [19]. But instead of clustering, he determines the Voronoi region containing the most misclassified samples of one class. The mean of these samples is chosen as a new prototype.

E. Proposed Placement Strategy: SamplingCost

The proposed new strategy relies on an optimization of the GLVQ-cost-function which is approximated by the sample Ψ . Thereby, prototypes are taken from candidate positions from a random subset $\hat{\Psi} \subseteq \Psi$ of size $|\hat{\Psi}| = \hat{t}$ only. For every candidate (x_i, y_i) in $\hat{\Psi}$, its effect on the costs can efficiently be approximated as follows:

1. Extend $\hat{W} := \{W \cup (x_i, y_i)\}$.
2. Update Ψ as described in (4) but store the result temporarily in another list Ψ' .
3. Calculate the cost-function value $E(\Psi', \hat{W})$ on the basis of the distances stored in Ψ' .

The sample with smallest value $E(\Psi', \hat{W})$ is added as a new prototype to W , and Ψ updated accordingly. The complexity is $\mathcal{O}(\hat{t} \cdot t)$ and pseudo code is depicted in Figure 1.

IV. ARTIFICIAL DATA

We compare these different placement strategies by integrating each approach separately in an online learning architecture. The resulting four online learning algorithms are trained using identical conditions on two artificial data sets with different characteristics. The main aim of these two-dimensional data sets is to investigate how precisely the strategies can represent the real class borders. The arrangement of these problems is shown in Figure 2. We used 70% of the data for training and the rest for testing.

```

function SAMPLINGCOST( $\Psi, \hat{t}$ )
   $minCost := 1$ 
   $proto := null$ 
   $\hat{\Psi} := getRandomSubset(\Psi, \hat{t})$ 
  for all  $(x, y) \in \hat{\Psi}$  do
     $\Psi' := updateShortTermMemory(\Psi, (x, y))$ 
     $cost := calculateCost(\Psi')$ 
    if  $cost < minCost$  then
       $minCost := cost$ 
       $proto := (x, y)$ 
    end if
  end for
  return  $proto$ 
end function

```

Fig. 1. Pseudo code for the placement strategy SamplingCost

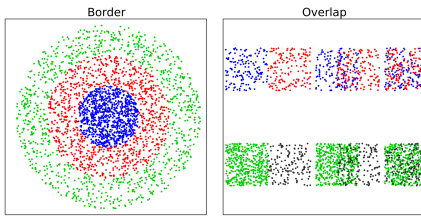


Fig. 2. Artificial data sets *Border* and *Overlap*. Different classes are coded by different colors. The *Border* data set (Fig. 2, left) consists of three circular classes. Each class consists of 1000 uniformly distributed points. The data set *Overlap* (Fig. 2, right) contains uniform squared distributions which overlap to various degrees. The upper row classes have the same densities whereas, below, the green class is three times denser than the black.

Overlapping distributions are usually the most difficult to deal with since a complete separation is not possible. Given an overlap, the densest class should be preferred in the Bayesian optimum. These challenges are incorporated in the *Overlap* data set, visualized in Figure 2 on the right.

One example of a final prototype arrangement of each strategy can be seen in Figure 3. Boundaries generated by *Closest* deviate the most from actual borderlines. On the *Border* data set, samples are separated very accurately at few specific spots, which are clustered with multiple prototypes, but a significant

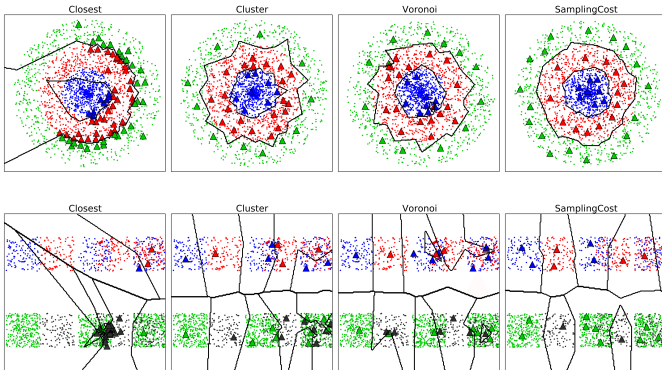


Fig. 3. Networks of each placement algorithm after the training of the data sets *Border* (top) and *Overlap* (bottom). Prototypes are symbolized by triangles and black lines represent the learned class boundaries.

TABLE I. RESULTS ON THE ARTIFICIAL DATA. THE AVERAGED TEST-ACCURACY AND NET-SIZE OF TEN REPETITIONS ARE DEPICTED.

<i>Border-DS</i>	Acc.	Nodes	<i>Overlap-DS</i>	Acc.	Nodes
SamplingCost	93.51	38.2	SamplingCost	78.74	21.3
Closest	90.17	58.2	Closest	65.76	29.8
Cluster	91.93	42.9	Cluster	74.85	25.6
Voronoi	91.71	46.4	Voronoi	74.08	26.4

portion of the actual border is uncovered and causes the majority of misclassifications. Whether a sample is promoted to a prototype or not is solely based on its distance to nodes of other classes. This leads to insertions along class borders and explains why the algorithm often gets stuck. A prototype inserted close to a border is very likely to cause new misclassified samples which are, in turn, closely located to this new prototype. Therefore, many unnecessary insertions are used to represent class boundaries at specific areas in contrast to some completely neglected parts. In case of the *Overlap* data set, this problem is even more severe and entraps the algorithm to insert prototypes in one exclusive area. *Closest* is very sensitive to noise since a single sample can cause multiple and consecutive prototype insertions.

Results of *Cluster* and *Voronoi* look quite similar. Prototypes are spread fairly regular and approximate the actual boundaries well. In case of ambiguous regions, unnecessary prototypes of both classes are placed regardless whether density proportions between classes are existing or not. Initially, classes with higher densities are favored because big clusters are likely to be found among them. But, as soon as they are covered, prototypes for less dense classes are inserted too and deteriorate the accuracy again. These strategies perform similarly because both compute clusters of misclassified samples and place prototypes in their centroids. The clustering quality is crucial for the performance, since too fine clustering leads to more prototypes than necessary and too coarse clustering can cause severe misplacement because centroids of too large cluster might be located within samples of another class. *Voronoi* clusters spatially by incorporating the available Voronoi cells which are shrinking continuously as more nodes are introduced into the net. Therefore, clustering is coarse initially and fine at the end. The few misplaced prototypes (Fig. 3) are caused by the initial coarse clustering. *Cluster*, on the other hand, utilizes k-Means, which requires the number of clusters as parameter in advance. Since a rather high number is chosen, coarse clustering is avoided and the number of samples per cluster is still high enough to prevent too fine clustering. Both algorithms are robust against noise because a high amount of accumulated noisy points of the same class is necessary to cause an insertion there.

SamplingCost reproduces the true class borders the most accurately. It distributes nodes regularly over the samples and balances the tradeoff between prototypes being placed as close as possible to samples of its own class and far from those of another class. Its cost-function optimization regards performances of all classes which is crucial for dealing with overlapping distributions as it can be seen by the result on the *Overlap* data set. It is able to assign ambiguous and non-ambiguous regions correctly and thereby considers also density differences.

Table I gives an overview of the achieved accuracies as well as the final net size. *Closest* is the worst strategy on both

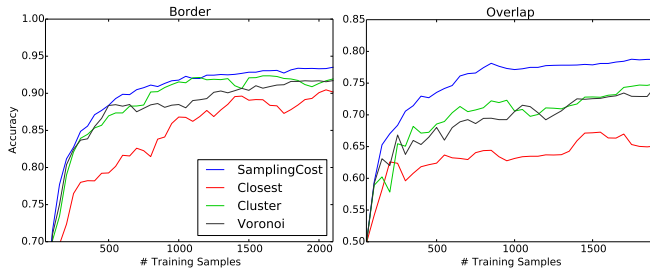


Fig. 4. Accuracies in the course of training for the artificial data sets. *SamplingCost* leads continuously and especially performs on the *Overlap* data set better than the rest.



Fig. 5. Typical scene of the interactive scenario. The robot drives randomly on the grass area and encounters various objects. The user follows the image-stream on the iPad and can label approached objects.

data sets, even though it uses the most prototypes. *Voronoi* and *Cluster* perform similarly with *Cluster* being slightly better. *SamplingCost* delivers the highest accuracies in spite of requiring the least number of nodes. Its lead is especially significant on the *Overlap* data set and outperforms the rest in every aspect. The achieved accuracies during training are depicted in Figure 4. *Closest* quickly loses touch, whereas *SamplingCost* is in the lead throughout training.

V. APPLICATION SETUP

In our scenario, an autonomous robot is exploring a garden environment (Fig. 45) in a random scheme. The user interacts in real-time with the robot by labeling approached objects via an iPad. Labeled objects are incrementally incorporated into the model and learned immediately enabling a direct reaction of the system. New objects can be introduced at any time. Whenever an object is approached, the robot stops in front of it within a certain distance. If the user does not provide a label, the robot announces the recognized class. Unknown objects as well as uncertain classifications are expressed explicitly. Object specific actions are only executed in case of confident classifications. Actions may include oral comments as well as driving behaviors such as avoiding or driving over. Objects are always avoided whenever they are classified as unknown or uncertain. Since the garden border is treated as any other object, but coupled strictly with avoidance, the robot stays within the grass area.

We used the Pioneer platform of Adept MobileRobots with a front-mounted Playstation Eye camera, which is directed on the ground and captures the scene with a frame rate of 120 Hz. Computation is done by a Lenovo ThinkPad, also mounted on

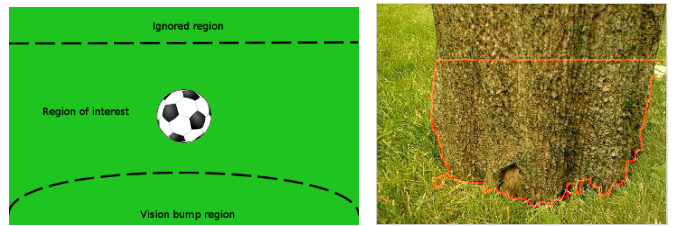


Fig. 6. Left: Partition of the input image. Objects are only examined as long as they are in the region of interest. Overlaps with the vision bump region end the examination and trigger a reaction. Information within the top marked area is ignored completely. Right: Masked area (red) of a close tree stump. The upper part of the image is disregarded even though it belongs to the object.

the robot. A color-based grass segmentation algorithm detects obstacles whenever their representation deviates significantly from an environment model. Since this model is adapted dynamically, a high range of color variety can be handled.

A. Filtering

The distance between near objects and the robot is used for the situation recognition. Far distanced objects should be ignored because an approach of these is uncertain. If an object is too close, a reaction, for example an avoiding maneuver, should be performed. Hence, only objects within a certain distance-window are relevant for learning. We mapped this window on image regions, as it can be seen in Figure 6. The upper part is ignored for processing, based on the assumption that far objects are located there. Close objects can be found on the bottom part of the image. Therefore, the robot stops as soon as the object contours overlap this lower part. However, the first assumption fails sometimes, for example concerning nearby tall objects as depicted in Figure 6 on the right. In this case available object information is thrown away.

Whenever multiple objects are segmented, only the dominant object is regarded. Dominance exists if one object is pixel-wise at least two times larger than the rest. In case of similar sized objects the learning is deactivated, but the collision avoidance is still performed. As long as an object is within the region of interest, object information is collected. Information is processed further only if the so-called vision bump region gets overlapped by the object. Therefore, only directly approached objects are considered, and the ones which are just passed by are ignored. Depending on whether a user-label was provided, either learning or classification follows the vision bump.

B. Apps

All data, for example trained images, classes and class-actions, are stored on the laptop. Apps act as clients and access data temporarily using a WIFI connection. The Labeling-app allows the user to manage previously recorded images. Object classes can be edited as well as corresponding actions. The robot pauses whenever this app is executed preventing any inconsistency between app and laptop on one hand and unsupervised robot actions on the other.

The Streaming-App provides insight into the current robot state during execution. Images as well as segmentation contours are streamed and can be accessed here. Whenever an object is approached, the user has the opportunity to label it for a certain time. Thereby the current classification result as well as its

confidence are displayed to facilitate the decision whether to label the current sequence or not. Labeling leads to an immediate, incremental learning process using the actual sequence as training data. Otherwise the sequence gets classified and possibly related actions are performed.

C. Data Representation

Since visual objects in our application scenario are mostly non-textured, we chose a rg-chromaticity color histogram as feature representation instead of local features such as SIFT [21]. Especially for outdoor scenarios, it is important to encode the color of an object independently from prevalent illumination. One step in this direction is to use an intensity invariant color space such as rg-chromaticity [22] which represents one color by the normalized proportions of red, green and blue instead of using their intensities (as done in the RGB space). The normalization removes intensity information and enables a two dimensional representation. Figure 7 visualizes the employed binning for six intervals resulting in a 21-dimensional feature vector. In addition, we normalize the feature vector to a total sum of 1 to achieve size invariance.

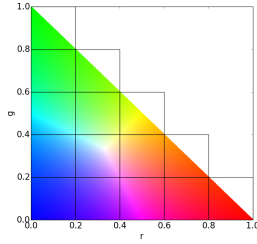


Fig. 7. Histogram binning of the rg-chromaticity space.

D. Sequence Confidence

We employ a confidence estimation to identify unknown objects and perform object specific action only for highly confident classifications. Fischer et al. analyzed recently various geometric certainty measures for LVQ [23]. Their accuracy vs. rejection results were comparable to those of statistical models. One of them, called Relative Similarity is particularly attractive since it is already normalized. However, this measure defines a measure for one input sample whereas we are interested in the estimation of whole sequences. Therefore we extended the measure in the following way. Let $\Gamma = \{\mathbf{x}_i\}_{i=1}^s$ be the set of features belonging to one sequence with the length s . The confidence that this sequence belongs to class β is defined as

$$C(\Gamma)_\beta = \frac{1}{s} \sum_{i=1}^s c(\mathbf{x}_i)_\beta,$$

where $c(\mathbf{x}_i)_\beta$ is the confidence that feature \mathbf{x}_i belongs to β . The classification of a sequence can be inhomogeneous. Since the Relative Similarity provides only a confidence for the nearest class, we use the following definition if β is not the nearest class:

$$c(\mathbf{x}, \beta) = \frac{d_1(\mathbf{x}) - d_2(\mathbf{x}, \beta)}{d_1(\mathbf{x}) + d_2(\mathbf{x}, \beta)}$$

$d_1(\mathbf{x})$ denotes the distance to the closest prototype, while $d_2(\mathbf{x}, \beta)$ is the distance to the closest prototype of class β . The sequence-confidence $C(\Gamma)_\beta$ varies between $[-1...1]$. Two thresholds θ_u and θ_c assign a certainty category Ω to a given sequence confidence C

$$\Omega(C) = \begin{cases} C < \theta_u & \text{unknown object} \\ C \geq \theta_u \text{ and } C < \theta_c & \text{uncertain classification} \\ \text{else} & \text{confident classification} \end{cases}$$



Fig. 8. Objects approached in different lighting conditions. Each row shows the first, fifth and tenth image of one approach. The upper row of each object was recorded in cloudy and the bottom row in sunny conditions.

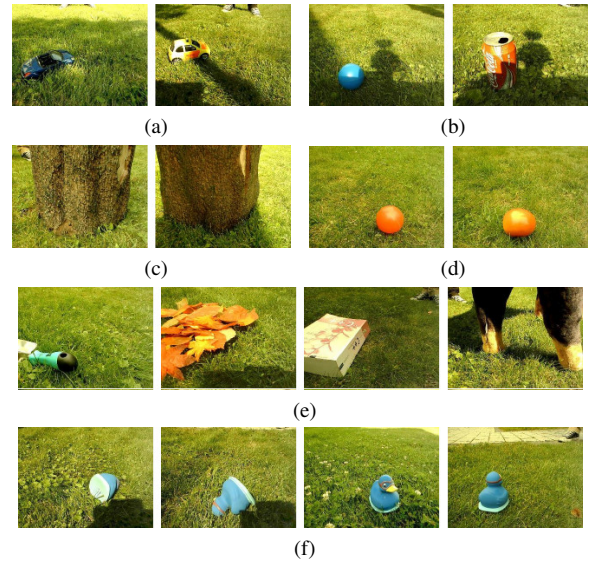


Fig. 9. Challenges of the Outdoor data set. Objects covered in various degrees by shadows cast by environmental obstacles such as trees or buildings (a) or by the robot itself (b). Sunlight and auto-exposure cause a darker object representation (c). Specular highlights (d). Occlusions by the image border (e). Various object poses (f).

VI. INTERACTIVE SCENARIO EVALUATION

We recorded a data set consisting of 40 Objects during the interactive scenario in an outdoor garden environment. Green colors were avoided to simplify the task for the color-based grass segmentation. Objects were approached five times in sunny and five times in cloudy conditions. The approaches were conducted from different directions. Each of them contains the last ten images before the vision bump was triggered. Altogether 4000 images were recorded. Figure 8 depicts examples for sequences containing objects with similar pose in different weather conditions. Usually, objects are only increasing in size and therefore the variance within one sequence is small. Figure 9 illustrates additional challenges comprised by this data set. Objects were completely or partly covered by hard or soft shadows (Fig. 9a). When the sun was in the back of the robot, a self-shadow was cast in driving direction and covered objects nearby (Fig. 9b).

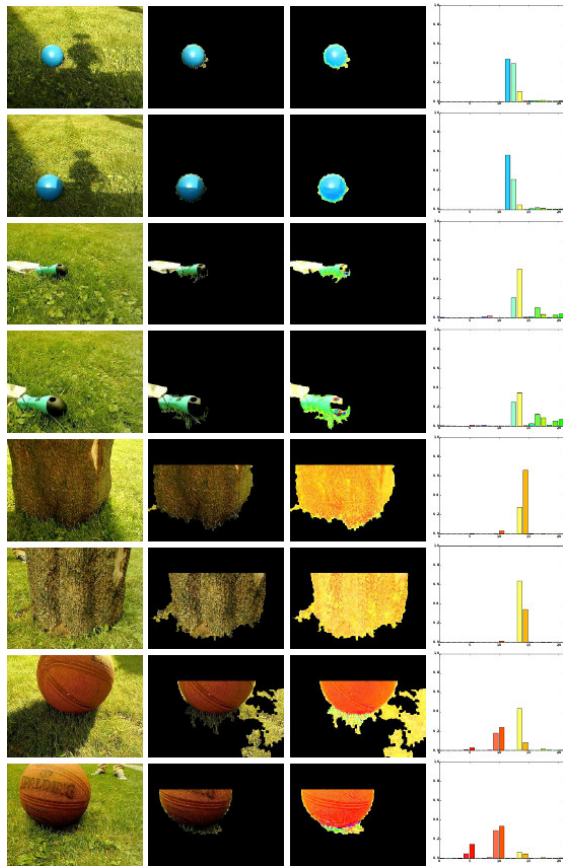


Fig. 10. Impacts of various challenges on the results of relevant processing steps. Each row depicts from left to right the recorded picture, the segmented object, the appearance in rg-chromaticity space and the color histogram. Illustrated are the effects of shadows (blue ball), occlusions (shovel), direct sunlight (stump) and wrong segmentations (basketball).

In the case of approaching the sun, objects were especially dark because of self-shadowing and auto exposure control (Fig. 9c). Direct spotlighting caused various sized specular highlights (Fig. 9d). Occlusions were mainly caused by the image border (Fig. 9e) and some tall objects always exceeded the image height when being approached. Arbitrary pose variations (Fig. 9f) were generated by throwing objects from a low height on the ground. Unfortunately, the mentioned cases do have a certain impact on the feature vector. Figure 10 illustrates this by visualizing outputs of all relevant processing steps - namely segmentation, color space transformation and histogram binning. The blue ball example depicts the influence of robot-cast shadows. Both pictures are taken from the same approach. Note that the shadowed region is still visible in the rg-chromaticity space even though it is slightly less distinct. This leads to a shift towards the dark blue bin and changes the representation. The shovel below illustrates the effect of occlusion. Its front part exceeds the image border in the course of an approach and removes a chunk of yellow portion from the representation. The stump shows another influence caused by lighting conditions. Its self-shaded appearance is clearly more brown than the yellow illuminated version below. All colors are shifted towards yellow due to the sunlight. Particularly grayscales such as the silver shovel or its black handle are mapped to the same

TABLE II. RESULTS FOR THE OUTDOOR DATA SET WITH SEQUENCED AND RANDOM ORDERED TRAINING.

<i>Sequence-order</i>	Test acc.	Train acc.	Nodes
SamplingCost	61.38	91.04	232.0
Closest	59.58	88.04	245.8
Cluster	59.18	88.96	235.6
Voronoi	58.81	89.22	231.3
<i>Random-order</i>	Test acc.	Train acc.	Nodes
SamplingCost	81.58	85.94	234.8
Closest	78.03	83.23	253.4
Cluster	78.55	83.06	247.0
Voronoi	81.18	85.62	236.6

yellow bin. Therefore, this dimension is the most prominent within the data set. The histogram difference for the basketball example is caused by improper segmentation, which occurred in a few cases. Since a bigger region is segmented, the brown bins for the real object color are proportionately smaller due to normalization. The opposite case, in which not the entire object is segmented, also happened, but is similar to the occlusion example.

A. Results

When it comes to online learning, the assumption of data being i.i.d. [16] often does not apply. In our interactive scenario, various consecutive images of the same object are recorded in constant pose and more or less constant lighting conditions. If the user decides to label this object sequence, all belonging samples are trained in the recorded order. In case of classification, the whole sequence is unknown for the classifier. Therefore, it is important to analyze the generalization to new object sequences, since this is the practically relevant case. It is particularly interesting considering the given small variance within one sequence compared to the high variance across different sequences. Hence, we trained the learning architecture sequence-wise in chunks of ten images. However, the order of the sequences was random. Table II shows the results for seven training sequences per object, achieved by each placement strategy. Also depicted is the outcome for training in random order with 70% of the data. The heavy performance decline on the test set for the sequence-wise order is striking. This allows the conclusion that generalization to completely unseen sequences is more challenging. Consequently, the chosen feature representation is not robust enough against the different variations contained in the data set. A lot of directly illuminated objects share a similar representation with a big concentration on the yellow bin and the variance of the representation across different objects is often smaller than those of the same object across different approaches. Nevertheless, a high accuracy is achieved when images are shuffled randomly. Even though a high variance is given for the data set, the difference of images within one sequence is usually small. As soon as one image of each sequence is contained in the training set, the major part of variance is covered and high rates are possible.

The nets are also larger for the sequence-wise order, which means that more errors occurred during training. One cause is the dependence of the GLVQ-updates on a random order since the cost-function has to be minimized in a stochastic gradient descent scheme. But the main reason is that, during training, the generalization from sequence to sequence is limited too.

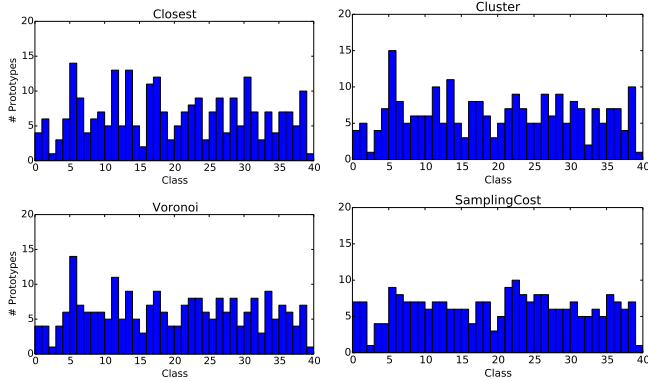


Fig. 12. Prototype distributions for the Outdoor data set.

Therefore, whenever a new sequence is trained, the classifier makes more mistakes until prototypes are added.

SamplingCost achieves the best results, but compared to the artificial data sets, the performance difference between placement strategies is rather small. The image data set contains many times more classes but less samples per class. Therefore, the choice among these samples is more limited per class, which leaves little leeway to choose good or bad candidates. Furthermore, the data in the high dimensional space is not broadly distributed but rather strongly clustered. Hence, the already limited choice makes additionally not a big difference.

Figure 11 illustrates accuracies during training. All placing strategies perform similar but *SamplingCost* leads continuously throughout the training. Figure 12 depicts the prototype distributions among all classes. The fact that *Closest* shows an irregular distribution with several difficult objects claiming more than ten prototypes, suggests that it provides

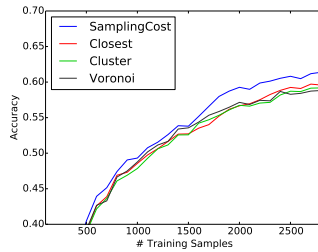







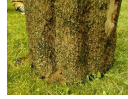







Fig. 11. Test-accuracies for sequence-wise training on the Outdoor data set.

too many prototypes for certain classes. *SamplingCost* distributes nodes very evenly since the cost-function optimization encourages regular spreading as already seen in the experiments with artificial data.

Table III ranks the top four objects claiming most prototypes and therefore being hardest to discriminate by *SamplingCost*. Most confusions are reasonable but the cause for mistaking the red pliers for the brown-black plush toy or the brown stump seems to be unclear because of their actual different color representation. However, a closer examination reveals that the major part of the actual red pliers, especially the front metal part, is yellow or orange in sunny conditions. This is also true for the two other objects as illustrated in Figure 13.

Objects claiming the fewest prototypes by all placement algorithms are shown in Figure 14. The wool requires exclusively a single node since it is the only purple object. The remaining easy objects were covered by 3-5 prototypes depending on the placement strategy. A rare color distribution

TABLE III. THE FOUR OBJECTS RECEIVING THE MOST PROTOTYPES BY *SamplingCost*. THE COLUMN ON THE RIGHT SHOWS THE CLASSES WHICH WERE THE MOST OFTEN CONFUSED WITH THE OBJECT.

Object	Mostly confused with
	  
	  
	 
	  

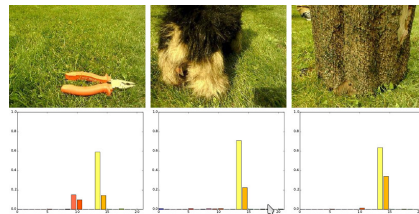


Fig. 13. Similarity due to the sunlight. Actually different colored objects are shifted to the same representation by direct sunlight.

paired with view angle independence are the key properties for effortless discrimination.

a) *Comparison with Incremental SVM*: To get a better picture of the performance of the online learning system in combination with the proposed *SamplingCost* insertion strategy, a comparison with the incremental support vector machine (iSVM), discussed in [7], [24] and [25], was done. We used the iSVM implementation provided by Diehl¹ [24] with Gaussian kernel ($C = 1024$, $\sigma = 0.05$). The iSVM stores the support vectors, and additionally a set of reserve vectors which are the points that can be seen at one time. Since this is the counterpart to our window of recent samples Φ , we limited its size to 200 entries. The iSVM was trained in a one-vs-all scheme. We increased considerably the prototype insertion frequency to achieve maximum performance. So far we coupled the insertion strategy with GLVQ. Here we also analyze the performance in combination with the generalized matrix LVQ (GMLVQ) [26]. This classifier is more powerful since it incorporates metric learning of the input space. Apart from our Outdoor data set we also evaluated the well-known benchmark COIL-100 [27] with the same feature rep-

¹Code at <https://github.com/diehl/Incremental-SVM-Learning-in-MATLAB>



Fig. 14. Easiest classes within the Outdoor data set. The wool was the only object requiring just one prototype across all algorithms.

TABLE IV. COMPARISON TO THE INCREMENTAL SVM ON THE OUTDOOR AND COIL DATA SET. *SamplingCost-GMLVQ* LEARNS ADDITIONALLY THE METRIC OF THE INPUT SPACE. PAIRS OF TEST-ACCURACY AND NODES WHICH ARE NOT PARETO DOMINATED ARE MARKED IN BOLD.

(a) Outdoor-Sequenced			
	Acc. / Nodes 500 samples	Acc. / Nodes 1500 samples	Acc. / Nodes 2800 samples
SamplingCost-GLVQ	42.9 / 116.4	58.6 / 446.2	64.3 / 948.8
SamplingCost-GMLVQ	44.1 / 100.4	59.3 / 376.6	67.1 / 773.5
iSVM	40.6 / 363.3	57.5 / 777.0	65.2 / 1347

(b) COIL-100			
	Acc. / Nodes 500 samples	Acc. / Nodes 1000 samples	Acc. / Nodes 1700 samples
SamplingCost-GLVQ	83.5 / 337.8	90.4 / 560.0	93.6 / 810.0
SamplingCost-GMLVQ	85.0 / 330.6	91.9 / 539.5	94.7 / 760.0
iSVM	85.6 / 1834	92.7 / 2139	95.6 / 2501

resentation. This RGB-image data set consists of 72 views for 100 objects each. These are placed in the coordinate origin and rotated around the Z axis in steps of 5° . Image size is 128×128 pixel. As in [28] a subset of 17 views per object, resulting in views every 20° , are used for training. Table IV shows the accuracy as well as the stored number of prototypes / support vectors after an increasing number of training examples. Our algorithm performs better than iSVM on the Outdoor data set and uses thereby a less complex model. The combination with the GMLVQ has always a higher accuracy and less nodes compared to the GLVQ one. Regarding the COIL data set, iSVM has a slightly higher accuracy but requires a considerably more complex model. Additionally the complexity, i.e. number of support vectors generated by iSVM, cannot be limited unlike for incremental LVQ variants.

VII. CONCLUSION

Our incremental learning architecture combines GLVQ with a placement strategy optimizing the cost-function on the basis of a limited sample history. The comparison on artificial and image based data sets showed the superiority of the proposed placement strategy over current heuristic-based strategies. The optimization can be done efficiently with linear complexity and enables the handling of overlapping distributions. Paired with the GMLVQ, our architecture achieves better results than the incremental SVM in most cases and requires thereby a clearly less complex model. We demonstrated the architecture within an interactive online learning scenario on a mobile robot. Objects, lying outdoor on the lawn, are trained in real-time and are instantly incorporated into the model representation, enabling a direct reaction of the system. The used rg-chromaticity color histogram turned out to be insufficiently robust to deal with changes due to various lighting conditions. Generalization to completely unseen image sequences, as necessary for the scenario, is therefore only partially possible. However, the representation is not coupled to our learning architecture and can be easily exchanged.

REFERENCES

- [1] R. Polikar and C. Alippi, "Guest editorial learning in nonstationary and evolving environments," *Neural Networks and Learning Systems, IEEE Transactions on*, vol. 25, no. 1, Jan 2014.
- [2] S. C. Hoi, J. Wang, and P. Zhao, "Libol: A library for online learning algorithms," *The Journal of Machine Learning Research*, vol. 15, 2014.
- [3] R. Yang and M. W. Newman, "Learning from a learning thermostat: Lessons for intelligent systems for the home," in *International Joint Conference on Pervasive and Ubiquitous Computing 2013*. ACM.
- [4] J. Forlizzi and C. DiSalvo, "Service robots in the domestic environment: A study of the roomba vacuum," in *1st ACM SIGCHI/SIGART Conference on Human-robot Interaction*, ser. HRI '06. ACM.
- [5] S. Ozawa, S. Pang, and N. Kasabov, "An incremental principal component analysis for chunk data," in *Fuzzy Systems, 2006 IEEE International Conference on*, 2006.
- [6] J. G. Dias and M. J. Cortinhal, "The skm algorithm: A k-means algorithm for clustering sequential data," in *IBERAMIA*, ser. Lecture Notes in Computer Science, vol. 5290. Springer, 2008.
- [7] G. Cauwenberghs and T. Poggio, "Incremental and decremental support vector machine learning," in *Proc. NIPS*, 2001.
- [8] S. Amershi and M. Cakmak, "Power to the people: The role of humans in interactive machine learning," *AI Magazine*, December 2014.
- [9] S. Kirstein, H. Wersing, and E. Körner, "Rapid online learning of objects in a biologically motivated recognition architecture," in *27th Pattern Recognition Symposium DAGM*. Springer, 2005.
- [10] J. Luo, A. Pronobis, B. Caputo, and P. Jensfelt, "Incremental learning for place recognition in dynamic environments," in *Proc. IROS 2007*.
- [11] D. Filliat, "Interactive learning of visual topological navigation," in *Proc. IROS 2008*, pp. 248–254.
- [12] T. M. Martinez and K. J. Schulten, "A "neural gas" network learns topologies," in *Proc. ICANN 1991*, 1991.
- [13] T. Kohonen, *Self-organizing maps*, 3rd ed., ser. Springer series in information sciences, 30. Berlin: Springer, December 2001.
- [14] M. Biehl, K. Bunte, and P. Schneider, "Analysis of flow cytometry data by matrix relevance learning vector quantization," *PLoS ONE*, 2013.
- [15] H. Wersing and E. Krner, "Learning optimized features for hierarchical models of invariant object recognition," *Neural Computation*, vol. 15, no. 7, 2003.
- [16] A. Carlevarino, R. Martinotti, and G. Metta, "An incremental growing neural network and its application to robot control," in *International Joint Conference on Neural Networks. 2000*, 2000.
- [17] Y. Jin and B. Hammer, "Computational intelligence in big data," *Computational Intelligence Magazine, IEEE*, vol. 9, no. 3, Aug 2014.
- [18] M. Grbovic and S. Vucetic, "Learning vector quantization with adaptive prototype addition and removal," in *IJCNN*, 2009.
- [19] S. Bermejo, J. Cabestany, and M. Payeras-Capellà, "A new dynamic lvq-based classifier and its application to handwritten character recognition," in *ESANN 1998*, 1998.
- [20] A. Sato and K. Yamada, "Generalized learning vector quantization," in *NIPS*. MIT Press, 1995.
- [21] D. G. Lowe, "Object recognition from local scale-invariant features," in *Proc. ICCV*, ser. ICCV '99. IEEE Computer Society, 1999.
- [22] A. K. Jain and S. Z. Li, *Handbook of Face Recognition*. Secaucus, NJ, USA: Springer-Verlag New York, Inc., 2005.
- [23] L. Fischer, B. Hammer, and H. Wersing, "Rejection strategies for learning vector quantization," ser. ESANN, 2014.
- [24] C. P. Diehl and G. Cauwenberghs, "Svm incremental learning, adaptation and optimization," in *Proc. IJCNN 2003*.
- [25] P. Laskov, C. Gehl, S. Krüger, and K.-R. Müller, "Incremental support vector learning: Analysis, implementation and applications," *J. Mach. Learn. Res.*, vol. 7, Dec. 2006.
- [26] P. Schneider, M. Biehl, and B. Hammer, "Adaptive relevance matrices in learning vector quantization," *Neural Comput.*, vol. 21, Dec. 2009.
- [27] S. A. Nene, S. K. Nayar, and H. Murase, "Columbia Object Image Library (COIL-100)," Tech. Rep., Feb 1996.
- [28] C. Wallraven, B. Caputo, and A. B. A. Graf, "Recognition with local features: the kernel recipe," in *ICCV*. IEEE Computer Society, 2003.